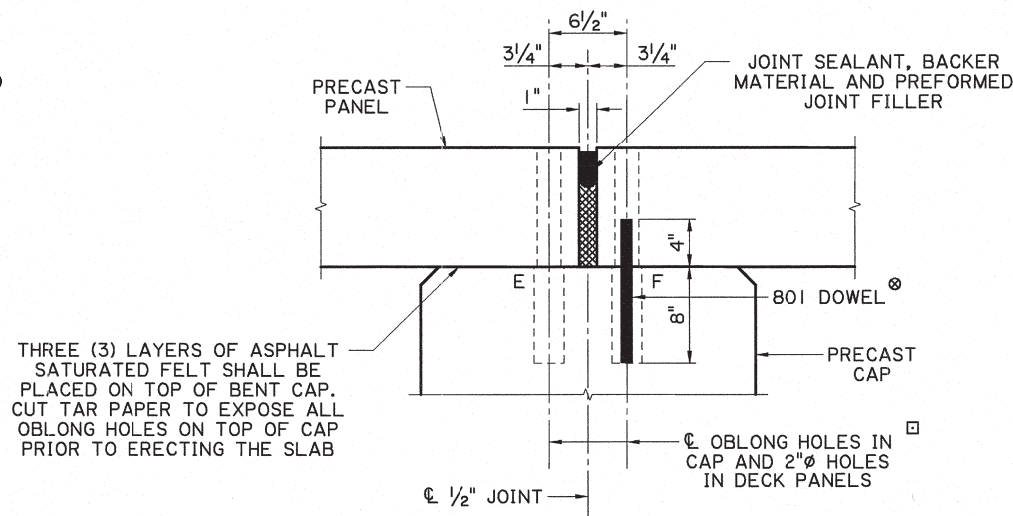


THREE (3) LAYERS OF ASPHALT SATURATED FELT SHALL BE PLACED ON TOP OF BENT CAP. CUT TAR PAPER TO EXPOSE ALL OBLONG HOLES ON TOP OF CAP PRIOR TO ERECTING THE SLAB

JOINT DETAIL
(TWO FIXED ENDS)

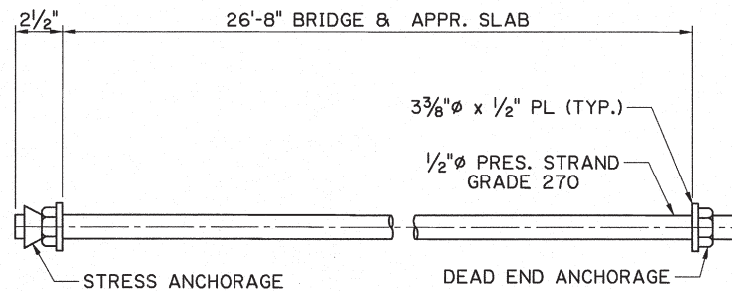


THREE (3) LAYERS OF ASPHALT SATURATED FELT SHALL BE PLACED ON TOP OF BENT CAP. CUT TAR PAPER TO EXPOSE ALL OBLONG HOLES ON TOP OF CAP PRIOR TO ERECTING THE SLAB

JOINT DETAIL
(EXPANSION & FIXED END)

☐ HOLES SHALL BE FILLED WITH NON-SHRINK GROUT AFTER DOWEL BARS ARE IN PLACE. USE AN ADEQUATE DEBONDER TO PREVENT BONDING OF THE GROUT WITH THE SLAB AND THE PILE CAP BEFORE GROUTING HOLES.

⊙ ONLY REQUIRED AT FIXED END

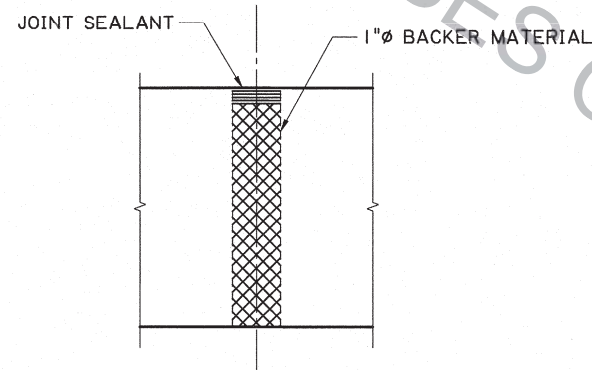


DETAILS OF PRESTRESSING STRANDS

NOTES:

THE PRESTRESSING STRAND SHALL BE SHEATHED WITH AN EXTRUDED PVC MATERIAL IN ACCORDANCE WITH THE POST-TENSIONING INSTITUTE SPECIFICATIONS. STRANDS SHALL BE TENSIONED TO 15 KIPS. THE ANCHOR SYSTEM SHALL BE OF THE APPROPRIATE TYPE MANUFACTURED BY ALTAS PRESTRESSING CORP., OR BY STRESS STEEL CORP., OR AN APPROVED EQUAL. ALL EXPOSED ENDS SHALL BE PAINTED WITH AN APPROVED COATING AFTER STRESSING.

SEE BRIDGE GENERAL PLAN SHEET FOR JOINT TYPE AND LOCATION.

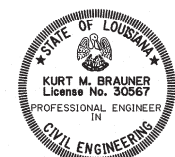


POST HOLE DETAIL
(TYP. FOR UNUSED BARRIER POST HOLES)

ESTIMATED QUANTITIES (ONE EXTERIOR UNIT)				
BAR NO.	UNIT LENGTH	TOTAL LENGTH	LOCATION	
901	8	19'-7"	156'-8"	LONGIT. BOT. OF SLAB
902	1	19'-5"	19'-5"	LONGIT. BOT. OF SLAB
TOTAL NO. 9 BARS = 176'-1" = 599 LBS.				
501	78	3'-0"	234'-0"	TRANS. TOP & BOT. OF SLAB
502	8	6'-9"	54'-0"	BOT. & TOP END OF SLAB
TOTAL NO. 5 BARS = 288'-0" = 300 LBS.				
401	4	19'-7"	78'-4"	LONGIT. TOP OF SLAB
TOTAL NO. 4 BARS = 78'-4" = 52 LBS.				
△ DEFORMED REINFORCING STEEL = 951 LBS.				
⊙ CLASS "PI" CONCRETE = 2.05 CU. YDS.				
CONCRETE RAILING (PER SPAN) = 40.00 LIN. FT.				

ESTIMATED QUANTITIES (ONE INTERIOR UNIT)				
BAR NO.	UNIT LENGTH	TOTAL LENGTH	LOCATION	
901	8	19'-7"	156'-8"	LONGIT. BOT. OF SLAB
902	1	19'-5"	19'-5"	LONGIT. BOT. OF SLAB
TOTAL NO. 9 BARS = 176'-1" = 599 LBS.				
502	8	6'-9"	54'-0"	TOP END OF SLAB
503	39	3'-8"	143'-0"	TRANS. BOT. OF SLAB
TOTAL NO. 5 BARS = 197'-0" = 206 LBS.				
401	4	19'-7"	78'-4"	LONGIT. TOP OF SLAB
402	17	3'-8"	62'-4"	TRANS. TOP OF SLAB
TOTAL NO. 9 BARS = 140'-8" = 94 LBS.				
△ DEFORMED REINFORCING STEEL = 899 LBS.				
⊙ CLASS "PI" CONCRETE = 2.46 CU. YDS.				

⊙ BASED ON A 10" THICKNESS
 △ ADD 2-801 DOWELS, 1'-0" LONG TO EACH UNIT WITH TWO FIXED ENDS AND 1-801 DOWEL TO UNITS WITH ONE FIXED AND ONE EXPANSION END.



K.M.B.
2/25/13

SHEET NUMBER
 DESIGNED BY: K. BRAUNER
 CHECKED BY: J. PELTIER
 RETAILER: J. PELTIER
 CHECKED BY: K. BRAUNER
 REVIEWED BY: P. VAUGHT
 SERIES #: 15 OF 16
 DATE: 03-01-17
 NO. 03-01-17
 UPDATED FOR 2016 SPECIFICATIONS
 REVISION OR CHANGE ORDER DESCRIPTION
 K.M.B. BY
 PRECAST CONCRETE DECK PANEL DETAILS
 BD.2.8.1.0.15 PRECAST PANEL DETOUR BRIDGE
 BRIDGE & STRUCTURAL DESIGN